

Eudora2goTM
Wireless Email
Reviewer's Guide

April 2005
QUALCOMM Incorporated



Eudora2go is powered
by Intellisync



Eudora2go servers
powered by Rockliffe



TABLE OF CONTENTS

EUDORA2GO PRODUCT INTRODUCTION	1
EUDORA USERS.....	2
INITIAL OFFERING	3
EUDORA 6.2 KEY FEATURES	4
PREMAIL™	4
EUDORA2GO.NET FULL-FEATURED EMAIL CENTER.....	5
EASY PROVISIONING	5
ACCESS EXISTING ACCOUNTS	6
DESKTOP EUDORA SETTINGS	6
YAHOO! AND GMAIL FORWARDING	7
OPERATORS AND COMPATIBLE HANDSETS	8
SYSTEM REQUIREMENTS FOR EUDORA2GO.NET	10
CONTACT INFORMATION	10
COMPANY INFORMATION	11

EUDORA2GO WIRELESS EMAIL PRODUCT INTRODUCTION

Eudora2go

Push email is quickly growing as the preferred manner for mobile workers. But a central question remains – How much of your mail do you want pushed to your device? All of it? Just certain senders? One sender? Of course it depends on the user. Now with Eudora2go mobile email system, the user is in charge.

Until now, those “push” email offerings have required pricey devices, limited (if any) hosted mail services and a complicated provisioning process. Now with Eudora2go built on the BREW application system, priority notification email is affordable and flexible. The Eudora brand stands for powerful email features and long standing user loyalty. Developed by Intellisync, an established BREW developer with SodaPop Mail and Email Executive applications. The Eudora2go solution features a full IMAP/POP compliant client on the handset, plus a hosted mail server -- Eudora2go.net.

At the heart of the Eudora2go system is PreMail™ - and innovative feature that lets the user select which senders' messages can be previewed by a push SMS alert to their device. The Eudora2go system is driven by the Eudora2go.net, hosted email service, which provides users a generous 100 MB of mail storage, anti-virus, anti-spam and SSL security. Eudora2go supports any existing email account, and can be accessed via IMAP or Web Mail.

Eudora2go Components include:

- PreMail™ - preview an SMS alert to view priority messages
- Push technology – no need to retrieve email – the mail finds you
- Eudora2go.net – hosted email service provides 100 MB of mail storage, plus advanced protection from spam and viruses and SSL security.
- No need to change your email address – just forward mail from your Gmail, Yahoo, MSN or other accounts.

“Eudora2go is the first mobile email application that offers the convenience of push email, within a simple, all-in-one package that is easy to download and configure. By combining an efficient client with a robust hosted mail service, Eudora2go can control the entire mail process and thereby deliver a consistent and user friendly email experience.”

David Ferris
President of Ferris Research

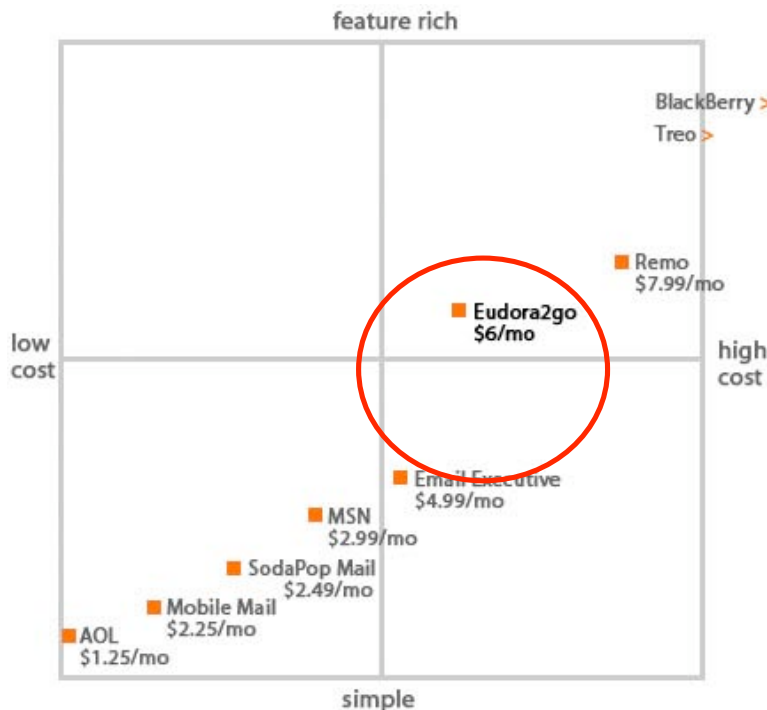
EUDORA2GO USERS

Eudora2go is designed for people who rely on email communication while in transit, at work and at home.

Eudora2go wireless email software works with any existing POP, IMAP or Webmail product. Supported servers include Hotmail, MSN, Yahoo!, Gmail, NetZero, Road Runner, Earthlink, Mindspring, POP, IMAP, Microsoft Exchange and Lotus Domino.

Individual consumers — Eudora2go offers a simple, all-in-one affordable solution for individuals looking for a convenient and easy-to-use mobile email program. Available with one download, over the air on wireless carrier networks.

SOHO and small business users — A high quality priority notification email solution without the investment in expensive and complex “smart” devices. Small office and home office users can be “on call” for their most important senders, without having to actively download all their email.



“Eudora2go fills a gap in the market. Other vendors in that space are very actively looking to develop or acquire products that complement the more monolithic e-mail accessibility models. Mid-sized enterprises are interested in more lightweight products. It hits at the intersection between a real serious need and a technology gap.”

William Hurley

Analyst with Enterprise Strategies Group

INITIAL OFFERING

While Eudora2go works with any existing mail service, Verizon Wireless, BREW and Eudora subscriber numbers will bolster the adoption rate.



BREW by the numbers

As of March, 2005 there are:

- 275M+ Worldwide BREW application downloads
- 41 Commercial BREW operators
(Verizon Wireless as launch operator)
- 32 Commercial BREW device manufacturers
- 24 Countries with BREW Services

Attendees can see the Eudora2go demo at the BREW 2005 Developers Conference.



- 13.3 million BREW wireless subscribers (as of June 2004)
- 43.8 million US Verizon Wireless subscribers

Eudora2go presence on the Verizon Wireless "Get it Now!" web pages, at the VZW booth at CTIA 2005 and other future VZW marketing promotions.

"With today's busy lifestyles, access to email while on the go is a must have for many of our customers. The availability of the Eudora2go e-mail suite on Get It Now provides a new service offering for e-mail, with innovative functionality like SMS-preview features that make the service fast and easy to use. "

Jim Straight
Vice President of Wireless Data and
Multimedia Services for Verizon Wireless

The Eudora logo is the word "EUDORA" in a bold, uppercase, sans-serif font, set against a black rectangular background.

EUDORA

- 7 million Eudora users worldwide
- 700 thousand opt-in subscribers to EudoraNews
- 2.2 million Sponsored mode users
- 500 thousand visitors per month to the Eudora.com site

EUDORA2GO KEY FEATURES

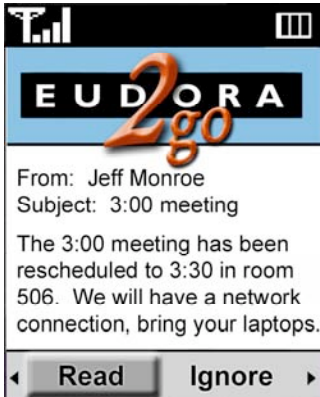
Eudora2go is the end-to-end, wireless solution that allows you to stay connected with all your accounts – anywhere.

The Eudora2go email client is powered by a generous 100 MB Eudora2go.net hosted email developed by Rockliffe, Inc. With the exclusive PreMail™ feature, users can ensure that priority senders can get right through to their handset via an SMS alert, then read the rest of their mail as time allows. Eudora2go delivers both the urgency of priority senders, plus the freedom to catch up on all mail as desired. And with the Eudora2go.net account, updating the PreMail list is easy.

PreMail™

When priority messages come into the Eudora2go.net server for those senders, it gets converted from SMTP into an SMS, which the Eudora2go application renders as a PreMail™ preview of the message. PreMail displays the “From”, and “Subject” of the message, plus the option to “Read Message” (= download entire message) or “Ignore”.

You can set as many PreMail senders as you like. Most users choose to see their “important” mail pushed to their phone, and the rest of the mail downloaded at a convenient time.



The PreMail feature allows a sneak peak at priority messages with the choice to then read or ignore.

The smart PreMail SMS alert displays mail from important sender without having to download.

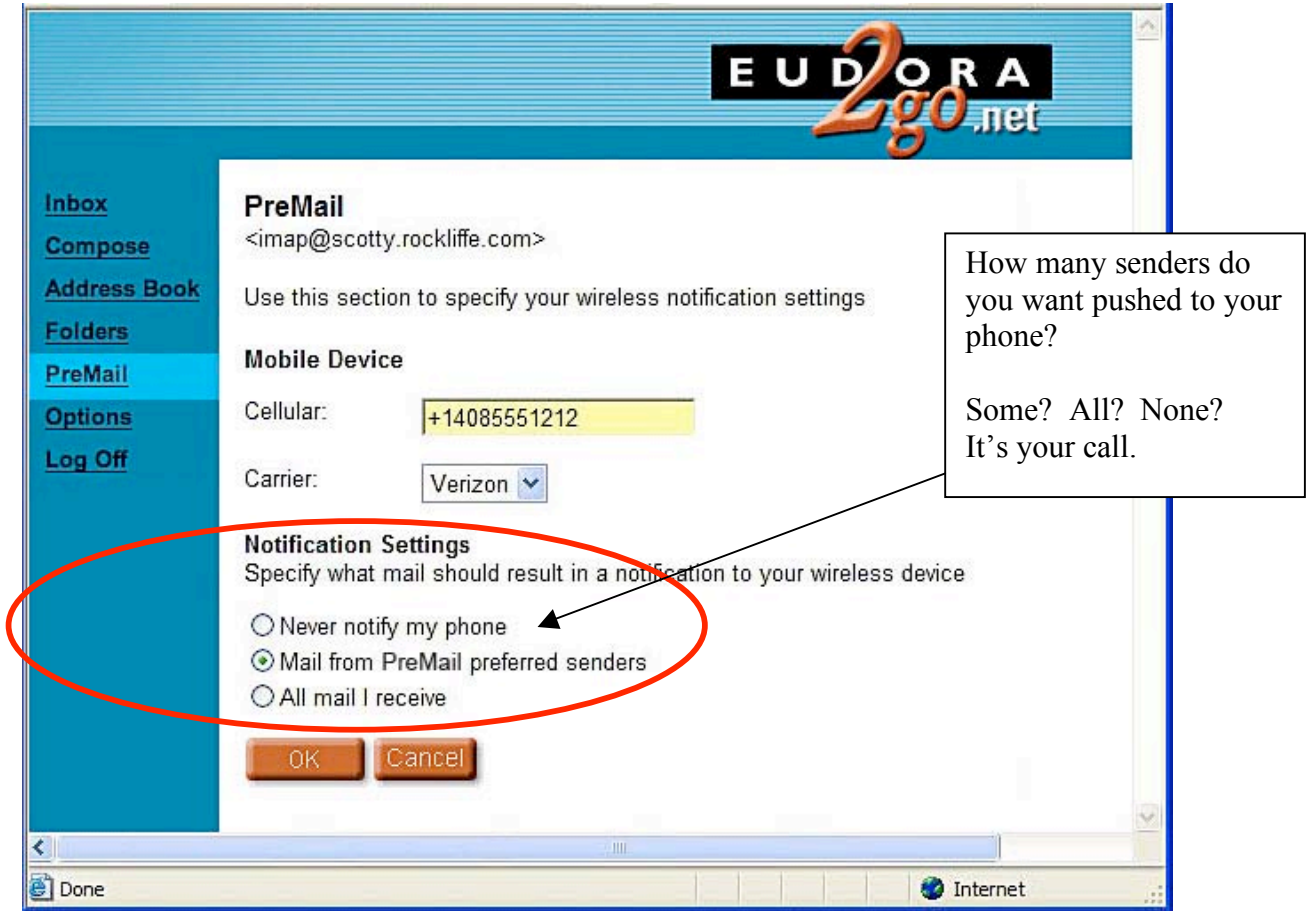
PreMail's push technology means there is no need to have to go fetch mail – priority senders in PreMail finds the user.



Get Mail is used to retrieve all mail on the users' convenient time-schedule.

EUDORA2GO KEY FEATURES (CONTINUED)

Eudora2go.net web interface – PreMail settings



Eudora2go.net – full-featured email center

Every Eudora2go user is provided a Eudora2go.net account. This account is a full-featured, 100 MB email center with advanced protection from spam and viruses as well as SSL security.

Easy Provisioning:

Getting your Eudora2go.net set up is simple and direct. Simply enter email address and password – and you're good to go. Say good-bye to lengthy, time consuming account set ups with involved data entry fields.

EUDORA2GO KEY FEATURES (CONTINUED)

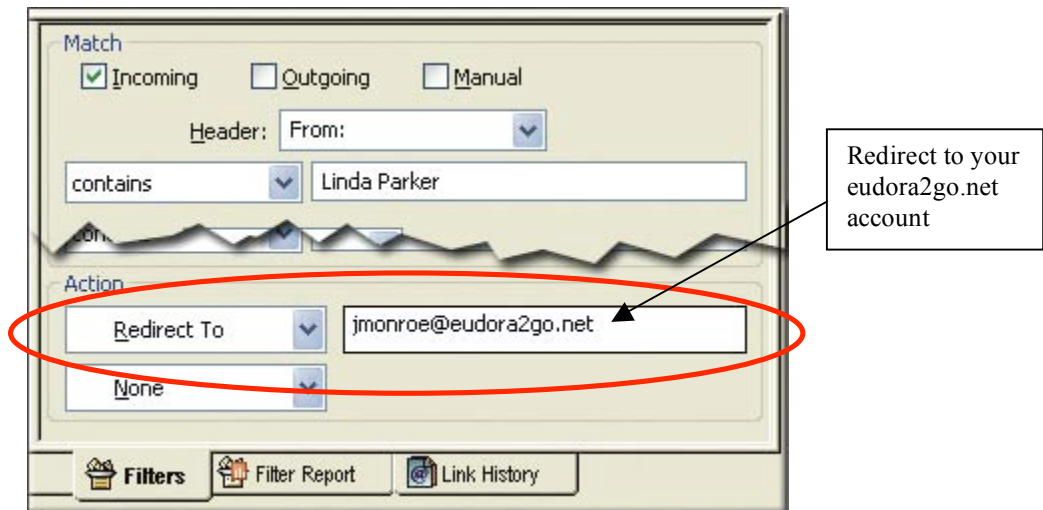
Access Existing Accounts:

With Eudora2go there is no need for a new email address!! Users can forward mail from existing Gmail, Yahoo, MSN or other accounts to Eudora2go.net. Mail from any of these web or IMAP accounts can also utilize the PreMail, priority SMS feature. In the phone application, users select “reply as” and fill in the same familiar email address they use so that their contacts can email them as usual.

Easy Forwarding

For Eudora desktop users, sending mail to eudora2go.net is a snap, thanks to its sophisticated filtering tools, a longstanding innovative trademark of Eudora.

Sending Desktop Eudora emails to the handset:



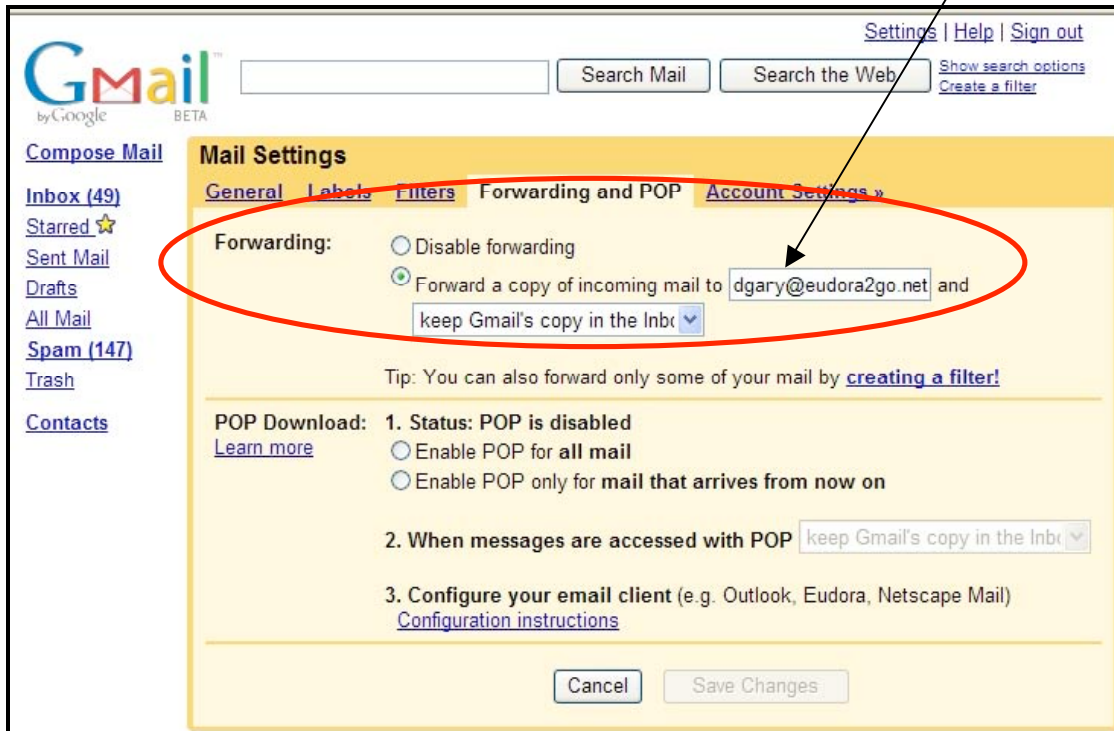
Forwarding desktop Eudora email to the handset is as easy as using the redirect filter in the desktop client. From the Tools menu, the pull-down sub-menu called “Filters” produces the dialog box as shown above.

Users can redirect select mail or all mail to their Eudora2go.net account.

Sending Yahoo! mail or Gmail to the handset:



Forward to the eudora2go.net account



OPERATORS AND COMPATIBLE HANDSETS

The initial offering will be on the Verizon Wireless "Get it Now" catalog using the following phones, with EV-DO technology, which ensures the latest, fastest data rates, perfectly suited for demanding email needs.

Eudora2go is available now on these handsets:



Samsung A890



LG 8000



LG 7000



Motorola 710

Eudora2go is coming soon to these handsets:



LG 6100



LG 6000



Audiovox CDM8940



Samsung 650



Samsung 670

Updates to the selection of compatible devices and networks can be found at:
www.eudora.com/eudora2go/handsets.

MOBILE EMAIL COMPARISON

BREW Client	Hosted Email Service	Push Email Technology	Anti-Virus	Anti-Spam	SSL	Retail Price	Email	Calendar	Synchronized Contact List
Eudora2go	✓	✓	✓	✓	✓	\$5.99/mo	✓		
My Mobile Mail						\$2.25/mo	✓		
MSN Mobile Messenger						\$2.99/mo	✓		
AOL Mobile Mail						\$1.25/mo	✓		
Remo						\$7.99/mo	✓	✓	✓

SYSTEM REQUIREMENTS FOR EUDORA2GO & EUDORA2GO.NET SERVICE

Eudora2go client application: User must be on the Verizon wireless network and have a device that has access to the Get It Now catalog. Users can then download the Eudora2go application over the air to their handset.

Eudora2go.net service is accessible by PC or Mac OS with internet connection. Eudora2go.net supports POP, IMAP and Webmail service.

CONTACT INFORMATION

For press inquiries only, contact:

EUDORA
www.eudora.com/eudora2go
eudora-pr@qualcomm.com
858-587-1121

INTELLISYNC
<http://www.intellisync.com>

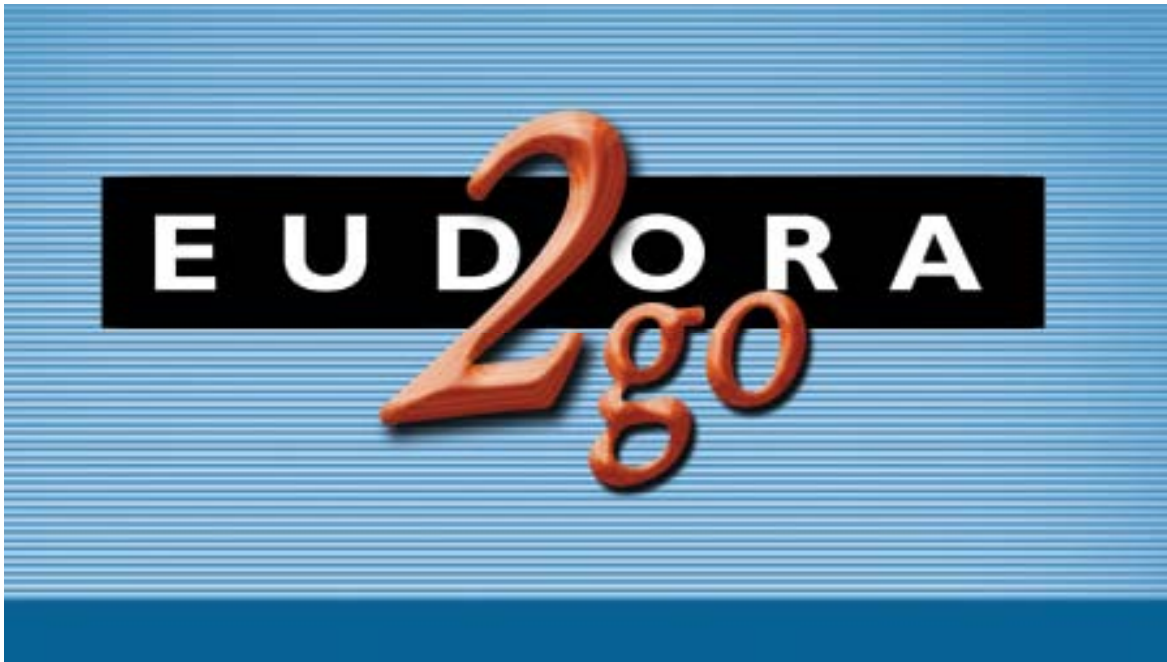
COMPANY INFORMATION

QUALCOMM Incorporated (www.qualcomm.com) is a leader in developing and delivering innovative digital wireless communications products and services based on the Company's CDMA digital technology. Headquartered in San Diego, Calif., QUALCOMM is included in the S&P 500 Index and is a 2003 FORTUNE 500[®] company traded on The Nasdaq Stock Market[®] under the ticker symbol QCOM. For more information about Eudora visit www.eudora.com.

Intellisync Corporation (Nasdaq: SYNC) is a leading provider of mobile software to large enterprises, mobile operators, software providers and device manufacturers. Intellisync has won the mobility industry's top awards by providing seamless synchronization, secure wireless email, device control and mobility management software that connects nearly every device, data source and application available. The world's largest corporations have selected Intellisync as their mobility solution standard, including America Online, Crédit Agricole, Domino's Pizza, Guidant, IBM, Microsoft, NTT DoCoMo, Oracle, PeopleSoft, Pfizer, Target, T-Mobile, Union Pacific, Verizon Wireless and Yahoo!

Intellisync recently acquired Tourmaline Networks, Inc. the leading provider of BREW email products to mobile operators around the world. Tourmaline's email products for mobile workers perfectly positioned Intellisync to develop the commercial version of Eudora email for BREW wireless.

Rockliffe was established in 1995 and is based in California's Silicon Valley with European headquarters in the UK. Rockliffe MailSite email server software and MailSite MP email gateways provide secure email server solutions and gateway email protection for more than 2,500 customers businesses and service providers hosting more than 15 million mailboxes worldwide. These include service providers such as Active24, Buckeye Cablevision, CommunityISP, eChalk, OneBox, MCI, and WestNet, and businesses such as Amersham Biosciences, Encyclopædia Britannica, and Media News Group. Rockliffe partners include HP, J2 Global Communications, Rockwell Collins, Sophos, Kaspersky and TouchPoint Solutions. For further information visit <http://www.rockliffe.com>.



Note: QUALCOMM is not liable for technical or editorial errors and/or omissions contained herein; nor for incidental or consequential damages resulting from the furnishing or use of this material. The information provided herein is subject to change without notice.